



2006 SUMMARY REPORT – STURGEON FALLS WATER TREATMENT PLANT

This report is a summary of water quality information for the Sturgeon Falls Water Treatment Plant, published in accordance with the Safe Drinking Water Act, 2002, Ontario Regulation 170/03, Schedule 22, for the reporting period of January 1, 2006 to December 31, 2006.

Schedule 22 states:

(2) *The report must,*

(a) *list the requirements of the Act, the regulations, the system’s approval and any order that the system failed to meet at any time during the period covered by the report and specify the duration of the failure; and*

(b) *for each failure referred to in clause (a), describe the measures that were taken to correct the failure.*

(3) *The report must also include the following information for the purpose of enabling the owner of the system to assess the capability of the system to meet existing and planned uses of the system:*

1. *A summary of the quantities and flow rates of the water supplied during the period covered by the report, including monthly average and maximum daily flows and daily instantaneous peak flow rates.*

2. *A comparison of the summary referred to in paragraph 1 to the rated capacity and flow rates approved in the system’s approval.*

List of System Failures of the Act, Regulations, Approvals and Orders

- The Municipality of West Nipissing is not aware of any system failures of the Act, Regulations, Approvals and Orders for the year 2006.

Water Taking and Treating for the Sturgeon Falls Water Treatment Plant - 2006

Month	Intake Average m ³ /d	Highest Daily Intake m ³ /d	Highest Instantaneous Intake m ³ /d	Treated Average m ³ /d	Highest Daily Treated m ³ /d
January	4577	5704	11775	4535	5674
February	4319	4638	6632	4370	4712
March	4392	4862	8151	4425	4865
April	4399	5043	7150	4388	5063
May	5042	6479	8464	4971	6511
June	6113	8628	14305	6058	8550
July	5512	7271	14208	5436	7216
August	5757	7623	8723	5752	7581
September	5153	7033	8426	4925	7040
October	4767	6061	7941	4558	5774
November	4680	5975	6548	4598	5728
December	4923	5729	6086	4732	5542



2006 SUMMARY REPORT – STURGEON FALLS WATER TREATMENT PLANT

Condition 4.1 of the Amended Certificate of Approval 7618-6QXP8Z, for Sturgeon Falls Water Treatment Plant

- *The drinking-water system shall not be operated to exceed the rated capacity for the maximum flow rate into the treatment system of 592 m³/hr (14 208 m³/d).*

Permit to Take Water No. 6281-6CVL9P

- *The maximum rate of withdrawal authorized under this Permit is 13 200 litres per minute (19.008 x 1000 m³/d) or 14 300 000 litres per day (14.3 x 1000 m³/d).*

The Sturgeon Falls Water Treatment Plant complied with Condition 1.2 of the Certificate of Approval, and the limits set out in the Permit to Take Water.

- The maximum daily rate of raw water into the water treatment plant for the year was 8.628 million litres per day in June, which was in accordance with the limits set out in the Certificate of Approval and the Permit to Take Water.
- The maximum instantaneous withdrawal rate for the year was 14.305 million litres per day in June, which did not exceed the limit, set in the Permit to Take Water.

SUMMARY REPORTS FOR THE VERNER WATER TREATMENT PLANT

Report

This report is a summary of water quality information for the [Verner Water Treatment Plant](#), published in accordance with Schedule 22 of Ontario's Drinking-Water Systems Regulation for the reporting period of [January 1, 2006 to December 31, 2006](#). The [Verner Water Treatment Plant](#) is categorized as a Large Municipal Residential Drinking Water System.

This report was prepared by The Ontario Clean Water Agency on behalf of [The Corporation of the Municipality of West Nipissing](#)

The following table lists the requirements that the system failed to meet and the measures taken to correct the failure:

Drinking Water Legislation	List the requirement(s) the system failed to meet	Specify the duration of the failure (i.e. date(s))	Describe the measures taken to correct the failure	Status (complete or outstanding)
O. Reg. 170/03	<p>All required notifications of adverse water quality incidents were not provided to the MOE Spills Action Centre and Medical Officer of Health</p> <p>One incident of high turbidity occurred on 22 Mar 06. The operator did not immediately report the incident to the Ministry's Spills Action Centre in accordance with O. Regulation 170/03. (SAC) (6 hours later)</p>	22 Mar 2006	<p>The delay in calling the MOE Spills Action Centre was due to the operator waiting to hear back from the health inspector before calling SAC.</p> <p>Instruction/training has been given to OCWA staff, in the event that the Health Unit cannot be reached right away (being paged), staff should proceed to contact the ministry and not wait until the Health Unit is reached.</p>	complete
Exceedance with C of A & the standards prescribed in O. Reg. 169/03 (ODWQS)	<p>Primary Disinfection UV dose < 22 W/ m²</p> <p>Turbidity spike due to loss of coagulant caused UV intensity to drop below 22 W/m² for approximately 21 minutes. Went down to approximately 19 W/m². We need to maintain 22 W/m² for the dose to be above 40 mj/cm².</p>	16-Feb-06	<p>Adverse Sample Notifications were made to the MOE and Health Unit as required and corrective actions were taken by the operations staff.</p> <p>Adverse notification AWQI #62544 Restored coagulant, backwashed both filters twice. Plant back online to clearwells.</p>	complete
	<p>Primary Disinfection UV dose < 22 W/ m²</p> <p>UV intensity dropped below 22 W/m² (to 19 W/m²) due to loss of pre-sodium carbonate chemical pump which caused low pH in pre-treatment which reduced the UV transmittance.</p>	20-Mar-06	<p>Adverse notification AWQI #62992 Restored pre-sodium carbonate pump operation. Backwashed both filters. Filtered water going into clearwell at approximately 02:20 after backwashing filters.</p>	complete
	<p>Filter Effluent Turbidity >1.0 ntu</p>	22-Mar-06	<p>Adverse notification AWQI #63026 Restored post filter turbidity < 1.0</p>	complete

Drinking Water Legislation	List the requirement(s) the system failed to meet	Specify the duration of the failure (i.e. date(s))	Describe the measures taken to correct the failure	Status (complete or outstanding)
	Post filter turbidity > 1.0 ntu from 01:55 to 02:52 with peak at 2.0 ntu.		ntu. Opened filter to waste 5 minutes and initiated backwash at approximately 02:45. Note: UV disinfection maintained and cl ₂ free residual at 1.57 mg/L. Bacti samples all clear.	
	Primary Disinfection UV dose < 22 W/ m ² UV intensity dropped below 22 W/m ² (to 21W/m ²) for approximately 35 minutes. UV dose < 40 MJ/cm ² .	21 Apr 06	Adverse notification AWQI #63530 Switched over to standby unit. UV dose > 40 MJ/cm ² at approximately 12:35. Secondary disinfection maintained 1.28 mg/L free cl ₂ . No further action required by MOE.	complete
	Primary Disinfection UV dose < 22 W/ m ² UV intensity dropped below 22 W/m ² (to 21 W/m ²) for approximately 60 minutes.	20-May-2006	Adverse notification AWQI #64992 Cleaned dirty UV sleeve and adjusted/increased soda ash and poly chemicals. Free cl ₂ residual maintained at 1.70 mg/L during UV adverse. 15:00 system back online. Turbidity 0.159 ntu, UV dose 26 W/m ² , Free cl ₂ 1.38 mg/L.	complete
	Primary Disinfection UV dose < 22 W/ m ² UV intensity dropped below 22 W/m ² (to 18.5 W/m ²) for approximately 120 minutes.	25-May-2006	Adverse notification AWQI #64279 Free cl ₂ maintained at 1.75 mg/L. Pre sodium carbonate system failed due to a plugged discharge line which caused the pH to drop before the filters. Restored pre sodium carbonate; readjust pH, backwashed both filters. UV dose > 40 MJ/cm ² at approximately 16:55.	complete
	Primary Disinfection UV dose < 22 W/ m ² Primary disinfection low UV dose for approximately 20 minutes < 40 MJ/cm ² @ 10:25 till 10:45.	23-Jun-2006	Adverse notification AWQI #65215 Secondary disinfection maintained approximately 1.88 mg/L free chlorine. Backwashed each filter once to avoid sending water to clearwell. Worked on treatment, increased alum dose. Water returning to clearwell at approximately 12:35; UV dose > 40 MJ/cm ²	complete
	Primary Disinfection UV dose < 22 W/ m ² Low UV dose for a total of approximately 6 minutes.	16-Sep-2006	Adverse notification AWQI #67896 Low UV dose for a total of approximately 6 minutes. Secondary disinfection maintained approximately 1.5 mg/L free. Alum pump discharge tubing plugged up which caused low UV transmittance. Restored alum pumping. Backwashed filter #1 three times and backwashed filter #2 three times. Between backwash cycles low UV dose occurred for approximately 1 minute duration x 6 backwashes = 6 minutes.	complete

The following information presents the Annual Record of Water Taking for the Verner Water Treatment Plant.

Raw Water

In overview some 164,301 cubic meters of water were taken in 2006. The average taking was 450 cubic meters per day. The maximum taking per day was 785 cubic meters in July and this was 74% of the maximum 1059 m³/day allowed under the Permit to Take Water.

Treated Water

In overview some 146,783 cubic meters of water were delivered to the distribution system in 2006. The average treated water delivered to the distribution system was 402 cubic meters per day. The maximum water delivered to the distribution system per day was 715 cubic meters in July and this was 66% of the 1088 m³/day rated capacity of the plant.

The full year's data is tabulated on the following pages.

Report prepared by:

John Hemingway
Process & Compliance Technician
OCWA - North Bay Hub



Ontario Clean Water Agency Monthly Process Data Report

Printed on: 4/12/2007
d_monthlyprocessrep

Municipality: Hamlet of Verner
 Facility: [5920] - Verner Water Treatment Plant
 Works: [210000951] - Verner Water Treatment Plant
 Classification: Class 4 Water Treatment
 Water Source: Veuve River

Period: 01/01/2006 to 12/31/2006
 Serviced Population: 1,100
 Total Design Capacity(m³/day): 1,059.0

	Jan/2006	Feb/2006	Mar/2006	Apr/2006	May/2006	Jun/2006	Jul/2006	Aug/2006	Sep/2006	Oct/2006	Nov/2006	Dec/2006	<-- Summary -->
Raw Water\Flows - Raw Water													
Raw Flow: Sum (m3/d)													
Avg	386.968	373.107	379.065	391.267	425.419	569.367	564.71	562.516	491.8	437.258	399.8	414.613	450.14
Max	487.0	430.0	493.0	619.0	537.0	707.0	785.0	645.0	659.0	535.0	484.0	559.0	785.0
Min	323.0	297.0	315.0	300.0	319.0	371.0	394.0	426.0	282.0	311.0	218.0	308.0	218.0
Sum	11,996.0	10,447.0	11,751.0	11,738.0	13,188.0	17,081.0	17,506.0	17,438.0	14,754.0	13,555.0	11,994.0	12,853.0	164,301.0
Treated Water\Flows - Treated Water													
Treated Flow (m3/d)													
Avg	342.968	331.286	333.161	349.333	385.129	525.633	509.677	508.419	448.767	379.419	347.4	359.71	402.145
Max	429.0	373.0	425.0	543.0	499.0	652.0	715.0	618.0	606.0	472.0	433.0	472.0	715.0
Min	288.0	285.0	245.0	265.0	272.0	404.0	385.0	407.0	259.0	240.0	206.0	272.0	206.0
Sum	10,632.0	9,276.0	10,328.0	10,480.0	11,939.0	15,769.0	15,800.0	15,761.0	13,463.0	11,762.0	10,422.0	11,151.0	146,783.0

Note: ? Calculation not verifiable. At least one result reported as < and at least one result reported >.

-1 Analysis result less than detectable limit

2006 Raw

Verner WTP 2005 Raw Water Consumption

Jan	Feb	Mar	Apr	May	Jun	Jul	Aug	Sep	Oct	Nov	Dec
-----	-----	-----	-----	-----	-----	-----	-----	-----	-----	-----	-----

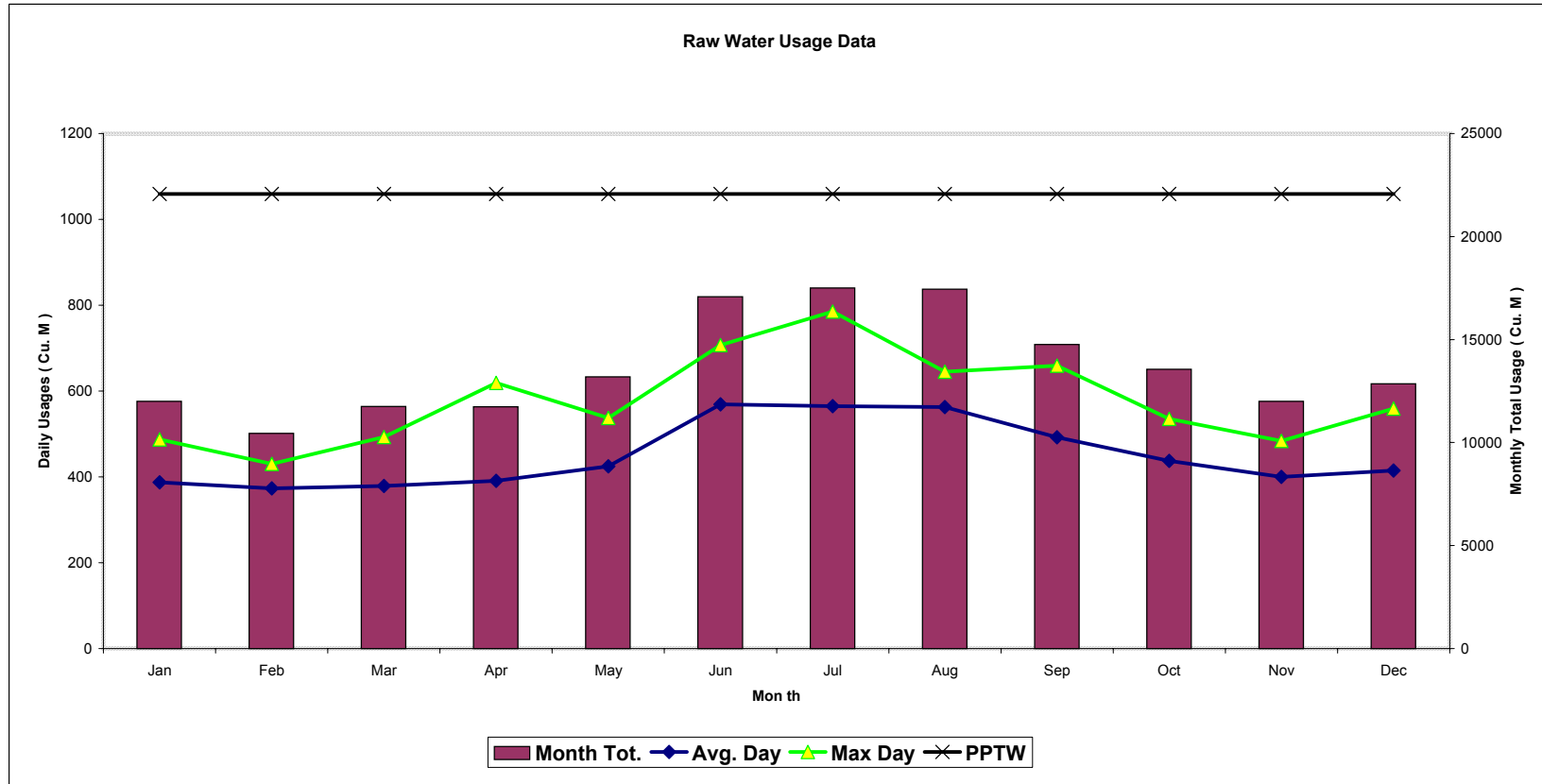
Year To Date

Cubic Meters

Month Tot.

11996	10447	11751	11738	13188	17081	17506	17438	14754	13555	11994	12853

164301



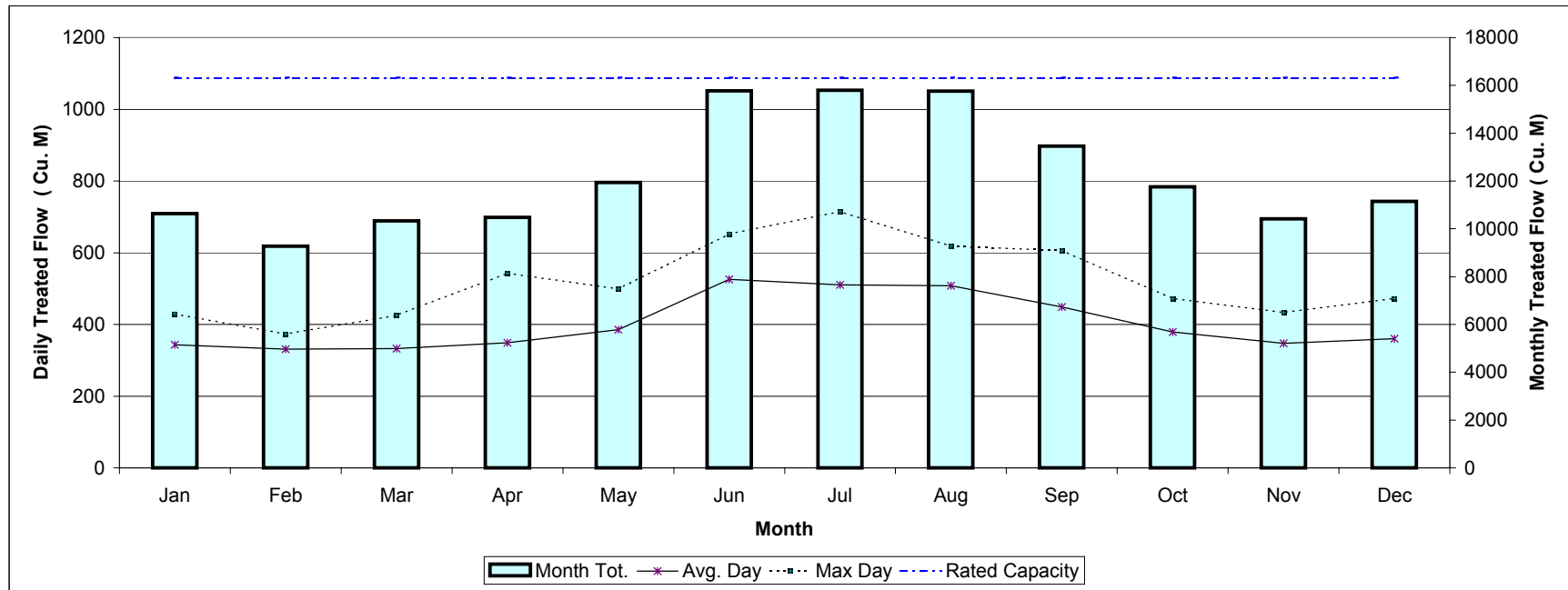
Verner WTP Treated Water Production

2006 Treated

Q1			Q2			Q3			Q4			Year To Date
Jan	Feb	Mar	Apr	May	Jun	Jul	Aug	Sep	Oct	Nov	Dec	

Cubic Meters

Month Tot.	10632	9276	10328	10480	11939	15769	15800	15761	13463	11762	10422	11151	146783
Avg. Day	343	331	333	349	385	526	510	508	449	379	347	360	402
Min Day	288	285	245	265	272	404	385	407	259	240	206	272	206
Max Day	429	373	425	543	499	652	715	618	606	472	433	472	715
Rated Capacity	1088	1088	1088	1088	1088	1088	1088	1088	1088	1088	1088	1088	1088
% Rated Capacity	39	34	39	50	46	60	66	57	56	43	40	43	66



**Part III Form 2
Section 11. ANNUAL REPORT.**

Drinking-Water System Number:	220000442
Drinking-Water System Name:	Sturgeon Falls Water Treatment Plant
Drinking-Water System Owner:	The Corporation of the Municipality of West Nipissing
Drinking-Water System Category:	Large Municipal Residential
Period being reported:	January 1, 2006 to December 31, 2006

<p><u>Complete if your Category is Large Municipal Residential or Small Municipal Residential</u></p> <p>Does your Drinking-Water System serve more than 10,000 people? Yes [] No [x]</p> <p>Is your annual report available to the public at no charge on a web site on the Internet? Yes [x] No []</p> <p>Location where Summary Report required under O. Reg. 170/03 Schedule 22 will be available for inspection.</p> <div style="border: 1px solid black; padding: 5px;"> <p>Sturgeon Falls Water Treatment Plant 11 Nipissing Street Sturgeon Falls ON P2B 1J4</p> </div>	<p><u>Complete for all other Categories.</u></p> <p>Number of Designated Facilities served: <input type="text"/></p> <p>Did you provide a copy of your annual report to all Designated Facilities you serve? Yes [] No []</p> <p>Number of Interested Authorities you report to: <input type="text"/></p> <p>Did you provide a copy of your annual report to all Interested Authorities you report to for each Designated Facility? Yes [] No []</p>
--	---

Note: For the following tables below, additional rows or columns may be added or an appendix may be attached to the report

List all Drinking-Water Systems (if any), which receive all of their drinking water from your system:

Drinking Water System Name	Drinking Water System Number
n/a	

Did you provide a copy of your annual report to all Drinking-Water System owners that are connected to you and to whom you provide all of its drinking water? Yes [] No []

Indicate how you notified system users that your annual report is available, and is free of charge.

Public access/notice via the web

Public access/notice via Government Office

Public access/notice via a newspaper

Public access/notice via Public Request

Public access/notice via a Public Library

Public access/notice via other method _____

Describe your Drinking-Water System

The Sturgeon Falls WTP commissioned in 1991, consists of a full surface water treatment facility, with a design capacity of 14 200 m³/day, drawing water from the Sturgeon River.

The process consists of:

- Intake from the Sturgeon River, equipped with manually removable screens
- Four vertical turbine raw water pumps
- Two up-flow pre-treatment tanks for flash mixing; flocculating chemicals consist of powdered limestone and aluminum sulphate, and activated silica as a coagulant aid
- Four sets of three-cells-in-series flocculation tanks
- Two rectangular settling tanks, each with an inclined plate settling system
- Three dual media (anthracite/sand) gravity filters
- Continuous filtered turbidity monitoring for each filter
- Filtered effluent discharge to the post-filtration chlorine contact tanks with optional filter-to-waste capability return to the Sturgeon River (unchlorinated)
- Chlorine gas addition points located before filters and after filter-to-waste valve
- One chlorine contact tank equipped with baffle walls, with an overflow pipe and discharge line to the underground reservoir
- Continuous Giardia Log removal calculations to monitor adequacy of disinfection
- Hydrated lime (calcium hydroxide) addition after the chlorine contact chamber for pH and alkalinity control
- Two cell in-ground treated water storage reservoir, equipped with valves to enhance flow through circulation
- A two-chamber high lift pump well located below the high lift pumping station
- Five vertical turbine type high lift pumps
- Post-chlorine gas addition to Distribution with continuous feed-back monitoring
- Hydrofluosilicic acid (fluoride) addition to Distribution with continuous feed-back monitoring
- Filter backwash system consisting of two filter backwash pumps, serving all filters
- Backwash wastewater discharge to the backwash settling tanks
- Three backwash settling tanks; supernatant return to Sturgeon River; settled sludge to sludge thickening tanks
- Two square sludge thickening tanks; sludge discharge to municipal sewage collection system; supernatant return to the Sturgeon River
- Back-up diesel powered generator servicing entire plant

List all water treatment chemicals used over this reporting period

- Alum (aluminum sulphate)
- Activated silica (sodium silicate and alum)
- Chlorine (gas)
- Limestone
- Hydrated lime (calcium hydroxide)
- Hydrofluosilicic acid (fluoride)

Were any significant expenses incurred to?

- Install required equipment
 Repair required equipment
 Replace required equipment

Please provide a brief description and a breakdown of monetary expenses incurred

Water Plant Material/Supplies/Rentals	\$14 000
Water Plant Equipment Maintenance/Repairs	\$25 000
Water Plant Process Chemicals	\$44 000
Water Quality Lab Testing	\$9 000
Consulting/Operator Training	\$59 000
Water Plant Utilities	\$116 000
Water Distribution Materials/Supplies/Repairs	\$70 000

Provide details on the notices submitted in accordance with subsection 18(1) of the Safe Drinking-Water Act or section 16-4 of Schedule 16 of O.Reg.170/03 and reported to Spills Action Centre

Incident Date	Parameter	Result	Unit of Measure	Corrective Action	Corrective Action Date
06-06-04	Low chlorine residual to Distribution (false readings)	<0.20	mg/L	<ul style="list-style-type: none"> • False readings on pump starts showing chlorine residual dropping below 0.20mg/L • MOE and Health Unit notified • Health Unit requested 8 distribution samples be collected and tested • All samples had adequate chlorine residual and negative bacti test results • Chlorination at the Water Treatment Plant was always maintained • The post chlorinator was shut off on June 5 for a test, and the residual chlorine dropped to 0.90mg/L, the low spikes for the pump starts were non-representative • AWQI 64600 	06-06-06
06-07-12	Total Coliform in Distribution sample	6	CFU/100mL	<ul style="list-style-type: none"> • Sampling bleed at end of Champagne was submerged in ditch • Pipe was thoroughly cleaned and disinfected with alcohol before re-sampling • Sample also collected at closest hydrant • Both samples were negative for bacti • Double check valve added to bleed • AWQI 65785 	06-07-17

Drinking-Water Systems Regulation O. Reg. 170/03

Incident Date	Parameter	Result	Unit of Measure	Corrective Action	Corrective Action Date
06-07-20	Total Coliform in Distribution sample	7	CFU/100mL	<ul style="list-style-type: none"> Sample was collected from continuous bleed off of hydrant at end of Cache Bay Road Re-sampled and re-tested; results were negative for bacti Bleed already equipped with air gap protection AWQI 66162 	06-07-22
06-08-12	Total Coliform in Distribution sample	1	CFU/100mL	<ul style="list-style-type: none"> Watermain was closed and isolated for high pressure cleaning on August 9 and 10 Affected residences were under boil water advisory when water service is restored Samples collected on August 11 after the cleaning had 1 CFU/100mL Total Coliform MOE and Health Unit notified; boil water stayed in effect Samples collected August 12 were negative Boil water advisory was lifted August 13. AWQI 66944 	05-09-06
06-10-30	Low chlorine residual in Distribution	0.0	mg/L	<ul style="list-style-type: none"> Dirty water complaint at 139 John Street Flushed hydrant at John and Arthur, but dirty water was not clearing Discovered watermain valve at John and Arthur was closed Opened valve and Note, sealants on the hydrant joints are made of lead Re-sampled according to protocol by collecting running water Re-sampled results were non-detect (<0.001mg/L) AWQI 60646 	05-11-08

Microbiological testing done under the Schedule 10, 11 or 12 of Regulation 170/03, during this reporting period.

	Number of Samples	Range of E.Coli Or Fecal Results (min #)-(max #)	Range of Total Coliform Results (min #)-(max #)	Number of HPC Samples	Range of HPC Results (min #)-(max #)
Raw	52	10 - 1320	< 5 - 40	0	
Treated	52	0 - 0	0 - 0	11	0 - 1
Distribution	212	0 - 0	0 - 7	14	0 - 52

Operational testing done under Schedule 7, 8 or 9 of Regulation 170/03 during the period covered by this Annual Report.

	Number of Grab Samples	Range of Results (min #)-(max #)
Turbidity	8760	Daily Average 0.028 - 0.220 NTU Instantaneous 0.028 – 4.647 NTU
Chlorine	8760	Daily Average 0.64 - 1.63 mg/L Instantaneous 0.00 – 2.73 mg/L
Fluoride (If the DWS provides fluoridation)	8760	Daily Average 0.02 - 0.80 mg/L Instantaneous 0.00 – 2.00 mg/L

NOTE: For continuous monitors use 8760 as the number of samples.

*NOTE: Record the unit of measure if it is **not** milligrams per litre.*

Summary of additional testing and sampling carried out in accordance with the requirement of an approval, order or other legal instrument.

Date of legal instrument issued	Parameter	Date Sampled	Result	Unit of Measure
7618-6QXP8Z (July 7/06)	Backwash SS	monthly	16.7	mg/L (annual average)

Summary of Inorganic parameters tested during this reporting period or the most recent sample results

Parameter	Sample Date	Result Value	Unit of Measure	Exceedance
Antimony	2006-10-11	< 0.0001	mg/L	no
Arsenic	2006-10-11	0.001	mg/L	no
Barium	2006-10-11	0.012	mg/L	no
Boron	2006-10-11	< 0.005	mg/L	no
Cadmium	2006-10-11	< 0.0001	mg/L	no
Chromium	2006-10-11	< 0.002	mg/L	no
Lead	2006-10-11	0.0003	mg/L	no
Mercury	2006-10-11	< 0.0001	mg/L	no
Selenium	2006-10-11	0.0018	mg/L	no
Sodium	2006-10-11	1.4	mg/L	no
Uranium	2006-10-11	< 0.00005	mg/L	no
Fluoride	2006-10-11	0.6	mg/L	no
Nitrite	2006-02-15	< 0.1	mg/L	no
	2006-05-16	< 0.1		
	2006-08-24	< 0.1		
	2006-10-11	< 0.1		
Nitrate	2006-02-15	0.2	mg/L	no
	2006-05-16	0.1		
	2006-08-24	0.1		
	2006-10-11	0.1		

Summary of Organic parameters sampled during this reporting period or the most recent sample results

Parameter	Sample Date	Result Value	Unit of Measure	Exceedance
Alachlor	2006-10-11	< 0.3	µg/L	no
Aldicarb	2006-10-11	< 3	µg/L	no
Aldrin + Dieldrin	2006-10-11	< 0.02	µg/L	no
Atrazine + N-dealkylated metabolites	2006-10-11	< 0.5	µg/L	no
Azinphos-methyl	2006-10-11	< 1	µg/L	no
Bendiocarb	2006-10-11	< 3	µg/L	no
Benzene	2006-10-11	< 0.5	µg/L	no
Benzo(a)pyrene	2006-10-11	< 0.005	µg/L	no
Bromoxynil	2006-10-11	< 0.3	µg/L	no
Carbaryl	2006-10-11	< 3	µg/L	no
Carbofuran	2006-10-11	< 1	µg/L	no
Carbon Tetrachloride	2006-10-11	< 0.2	µg/L	no
Chlordane (Total)	2006-10-11	< 0.04	µg/L	no
Chlorpyrifos	2006-10-11	< 0.5	µg/L	no
Cyanazine	2006-10-11	< 0.5	µg/L	no
Diazinon	2006-10-11	< 1	µg/L	no
Dicamba	2006-10-11	< 5	µg/L	no
1,2-Dichlorobenzene	2006-10-11	< 0.1	µg/L	no
1,4-Dichlorobenzene	2006-10-11	< 0.2	µg/L	no
Dichlorodiphenyltrichloroethane (DDT) + metabolites	2006-10-11	< 0.1	µg/L	no
1,2-Dichloroethane	2006-10-11	< 0.1	µg/L	no
1,1-Dichloroethylene (vinylidene chloride)	2006-10-11	< 0.1	µg/L	no
Dichloromethane	2006-10-11	< 0.3	µg/L	no
2,4-Dichlorophenol	2006-10-11	< 0.1	µg/L	no
2,4-Dichlorophenoxy acetic acid (2,4-D)	2006-10-11	< 5	µg/L	no
Diclofop-methyl	2006-10-11	< 0.4	µg/L	no
Dimethoate	2006-10-11	< 1	µg/L	no
Dinoseb	2006-10-11	< 0.5	µg/L	no
Diquat	2006-10-11	< 5	µg/L	no
Diuron	2006-10-11	< 5	µg/L	no
Glyphosate	2006-10-11	< 25	µg/L	no
Heptachlor + Heptachlor Epoxide	2006-10-11	< 0.1	µg/L	no
Lindane (Total)	2006-10-11	< 0.1	µg/L	no
Malathion	2006-10-11	< 5	µg/L	no
Methoxychlor	2006-10-11	< 0.1	µg/L	no
Metolachlor	2006-10-11	< 3	µg/L	no
Metribuzin	2006-10-11	< 3	µg/L	no
Monochlorobenzene	2006-10-11	< 0.2	µg/L	no
Paraquat	2006-10-11	< 1	µg/L	no
Parathion	2006-10-11	< 3	µg/L	no
Pentachlorophenol	2006-10-11	< 0.1	µg/L	no
Phorate	2006-10-11	< 0.3	µg/L	no
Picloram	2006-10-11	< 5	µg/L	no
Polychlorinated Biphenyls(PCB)	2006-10-11	< 0.05	µg/L	no
Prometryne	2006-10-11	< 0.1	µg/L	no
Simazine	2006-10-11	< 0.5	µg/L	no

Parameter	Sample Date	Result Value	Unit of Measure	Exceedance
THM (NOTE: show latest annual average)	2006-02-15	26.2	µg/L	no
	2006-05-16	96.7		
	2006-08-24	99.4		
	2006-10-11	61.5		
Temephos	2006-10-11	< 10	µg/L	no
Terbufos	2006-10-11	< 0.3	µg/L	no
Tetrachloroethylene	2006-10-11	< 0.2	µg/L	no
2,3,4,6-Tetrachlorophenol	2006-10-11	< 0.1	µg/L	no
Triallate	2006-10-11	< 10	µg/L	no
Trichloroethylene	2006-10-11	< 0.1	µg/L	no
2,4,6-Trichlorophenol	2006-10-11	< 0.1	µg/L	no
2,4,5-Trichlorophenoxy acetic acid (2,4,5-T)	2006-10-11	< 10	µg/L	no
Trifluralin	2006-10-11	< 0.5	µg/L	no
Vinyl Chloride	2006-10-11	< 0.2	µg/L	no

List any Inorganic or Organic parameter(s) that exceeded half the standard prescribed in Schedule 2 of Ontario Drinking Water Quality Standards.

Parameter	Result Value	Unit of Measure	Date of Sample

(Only if DWS category is large municipal residential, small municipal residential, large municipal non residential, non municipal year round residential, large non municipal non residential)